



Hidden History Murals

- A Streak of Lightning Over Sugarloaf, 132 S. Main, Neshkoro
- B First Train to Neshkoro, 216 S. Main, Neshkoro
- C Reetz Meats, Old Schoolhouse, Neshkoro Community Mural, 230 S. Main St, Neshkoro
- D All Gave Some & Some Gave All, Veterans Memorial Park, 311 S. Main, Neshkoro
- E Crossing the White River, Gohkle's Realty, 126 S Main, Neshkoro
- F Harrisville Sportsmen's Club, Harrisville Tractor Pullers, Club Emblems, Harrisville Historic Mural, W5079 County Road J, Harrisville
- G Streak of Lightning & Early Settlers, 125 Lawrence St, Westfield
- H Freedom Isn't Free, Westfield Veterans Memorial, Main & Spring St. at bridge by Mill Pond, Westfield
- I Our Son's Rural Graffiti, W7271 Cty Rd E., Westfield
- J Welcome to Packwaukee, W5950 Main St, Packwaukee
- K Outdoor & Wildlife Panorama, Rivers Bend Resort (indoors), W2614 Fox Lane, Montello
- L Granite City & Historic Photos, Montello Historic Preservation Society, 55 W Main, Montello (both sides of building)
- M Granite Falls (indoors), 55 W. Montello St., Montello
- N Jacob's Ladder, corner of Hwy 22 & 23, downtown, Montello
- O Here Comes the Sun, Endeavor Lions Park, back of concession stand, 201 E Prairie St, Endeavor
- P Glenn Steffen Memorial, Endeavor Lion's Park
- Q Henry Gauger Memorial, Endeavor Lion's Park
- R Tuffy the Bear, Tuffy's Cabin, W8790 Hwy 82, Oxford (view from Cty EE)
- S Historic Telephone Company, Marquette Adams Telephone Cooperative, 113 N. Oxford St, Oxford
- T Oxford Spirit, 135 W. Ormsby St., Oxford
- U Hands All Around, Oxford Village Hall (2 indoors), 129 Franklin Ave, Oxford
- V Up North Hunting (indoors), 126 W. Ormsby St., Oxford

www.barnquiltsandmurals.org

Please check our website for additions, stories, GPS map links, self-guided tours, and more.

Relax, Meander, Enjoy... Stay Awhile

www.barnquiltsandmurals.org

Visit our website for stories, GPS map links, self-guided tours, additions and more.

Barn Quilts of Marquette County

Over 40 Barn Quilt blocks, many representing heritage quilt designs, are painted on exterior signboard, then hung on barns or buildings throughout Marquette County. Quilting is in the fabric of Marquette County, which has a quilting specialty store and the Calico Capers Quilt Guild. The Marquette County Historical Society holds records and photos of all Marquette County quilts recorded in the Wisconsin Historical Society Quilt project. Our rich agricultural history mixes perfectly with our love of quilts to produce the Barn Quilts project.

Hidden History Murals

Hidden History Murals moves art out of traditional venues to adorn Marquette County roads and communities. There art IS – when you come for a visit, drive to work, go to the store, take your kids to school, ride your bike, go for a walk – on the side of a building, on the side of a barn- where you least expect it. There's only one stoplight in Marquette County and no traffic jams; just miles of beautiful, gently rolling countryside. Visit our towns and villages to enjoy our public art.

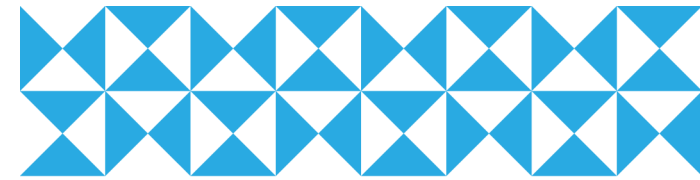
A project of



Marquette County Home and Community Education Association (HCE)

Co-sponsors / Key Contributors

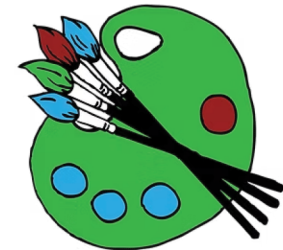
Adams-Columbia Electric Cooperative	Moundville HCE
Alliant Energy Foundation	Marquette County Historical Society
Endeavor Beautification Committee	Marquette County Visitors Bureau
Calico Caper Quilt Guild	Montello Historic Preservation Society
Lions Clubs of Endeavor, Oxford, Neshkoro & Westfield	Neshkoro Enhancement Committee
Louise Back, Homespun Fabrics	Neshkoro Public Library
Jeff Napp, Dodge Station Pottery	Veterans of Neshkoro & Westfield
June Schumacher, Artist Advisor	National Endowment for the Arts
Sue Allen, Coordinator	Wisconsin Arts Board



MARQUETTE COUNTY
WISCONSIN



BARN QUILTS & HIDDEN HISTORY MURALS



**Trails Map &
Area Information**

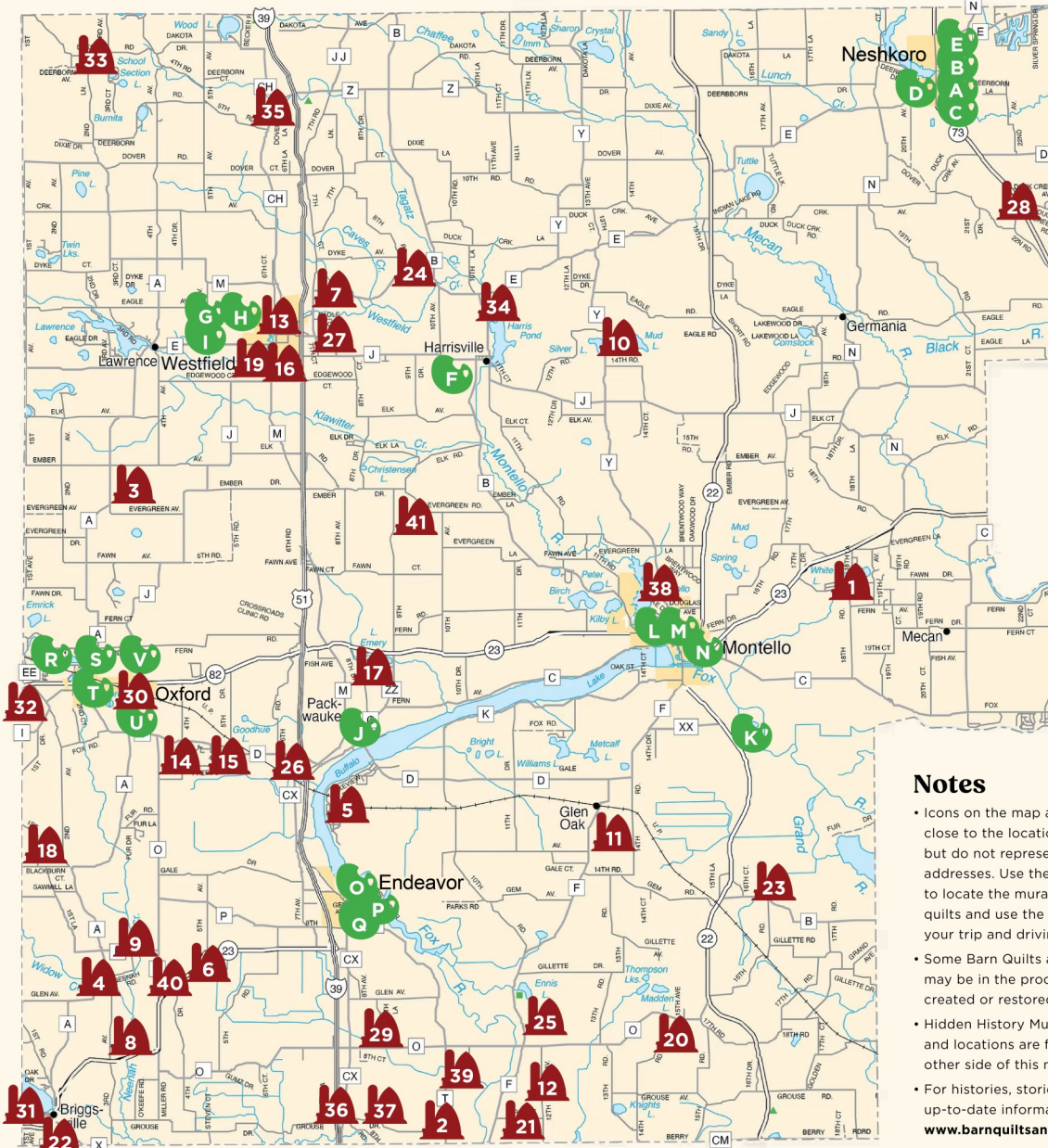
www.barnquiltsandmurals.org





Barn Quilts

- 1 Friendship Quilt, N4690 White Lake Drive, Montello
- 2 Contrary Wife, N149 County Rd T, Endeavor
- 3 Farmer's Daughter, N5656 Cty Rd A, Westfield
- 4 Stars and Stripes, N1569 Cty Rd A, Endeavor
- 5 Cathedral Window, N3080 Lakeview Drive, Packwaukee
- 6 Lone Star, W7317 State Hwy 23, Endeavor
- 7 Harvest Star, N6978 Cty Rd E, Westfield
- 8 Basket, W8046 State Hwy 23, Endeavor
- 9 Hunter's Star, N1525 Cty Rd O, Endeavor
- 10 Country Farm, N6524 Cty Rd Y, Montello
- 11 Cotter Family Crest, N2766 Cty Rd F, Montello
- 12 Irish Ancestors, N182 12th Ave, Montello
- 13 Bats in the Belfry, 251 E 2nd St, Westfield (from Charles St)
- 14 Arrow Crown, W7254 Freedom Rd, Oxford (from EAST)
- 15 Pinwheel Star, W7128 Freedom Rd. (from WEST)
- 16 Corn and Beans, Marquette County Fairgrounds, 757 S Main St, Cty Rd M, Westfield
- 17 Windmill, N3839 Cty Rd ZZ, Montello
- 18 Mother's Pride, 3524 1st Drive, Oxford
- 19 County Fair, Marquette County Fairgrounds, 757 S. Main St, Cty Rd M, Westfield
- 20 Whispering Pines Star, N1045 14th Rd, Montello
- 21 Aunt Ida's Crazy Quilt, N9905 Link Road, Portage
- 22 Tree of Life, W8631 Cty Rd X, Briggsville
- 23 Grandmother's Flower Garden, W2470 Cty Rd B, Montello (right of house facing barn)
- 24 Autumn Star & Pinwheel, W5461 Cty Rd E, Westfield
- 25 Megan's, Marta's & Gretchen's Quilts, N1194 Cty Rd F, Montello
- 26 Butterfly, W6835 Cty Rd D, Oxford
- 27 Runs Like A Deer, N6936 County Road E, Westfield
- 28 Sunbonnet Sue, N7795 22nd Rd, Princeton/Neshkoro
- 29 Stars and Stripes, W5590 Cty Rd O, Endeavor
- 30 Knowledge, Oxford Library, 129 Franklin Ave, Oxford
- 31 Ohio Star, 530 State Road 23 East, Briggsville
- 32 Summers' Spring Garden, 3360 5th Lane, Oxford
- 33 Goose Tracks, N8917 Deerborn Ave., Westfield
- 34 Cardinal Love, N7012 County Road B, Harrisville
- 35 Cynde Culbert Memorial - Northern Cardinal, N8712 County Road CH, Westfield
- 36 Hunter, N129 8th Rd., Portage
- 37 Flying Eagle, W5838 Grouse Dr., Endeavor
- 38 Evergreen, 75 North St, Montello
- 39 Carpenter's Star, N124 County Hwy T, Endeavor
- 40 Mariner's Compass (view from Hwy 23) and Monarch (view from County O), N1352 County Road O, Endeavor
- 41 Red, White & Blue, N5308 9th Ave, Montello



Notes

- Icons on the map are placed as close to the location as possible, but do not represent exact addresses. Use the address to locate the murals and barn quilts and use the map to plan your trip and driving route.
- Some Barn Quilts and Murals may be in the process of being created or restored.
- Hidden History Mural images and locations are found on the other side of this map.
- For histories, stories and up-to-date information, visit www.barnquiltsandmurals.org



Barn Quilt Locations



Mural Locations



Scale 0 1 2 3 4 5 miles

For attractions and accommodations, visit:
TravelMarquetteCounty.com

www.barnquiltsandmurals.org

Check website for GPS maps and stories for each location.
 More will be added from time to time.